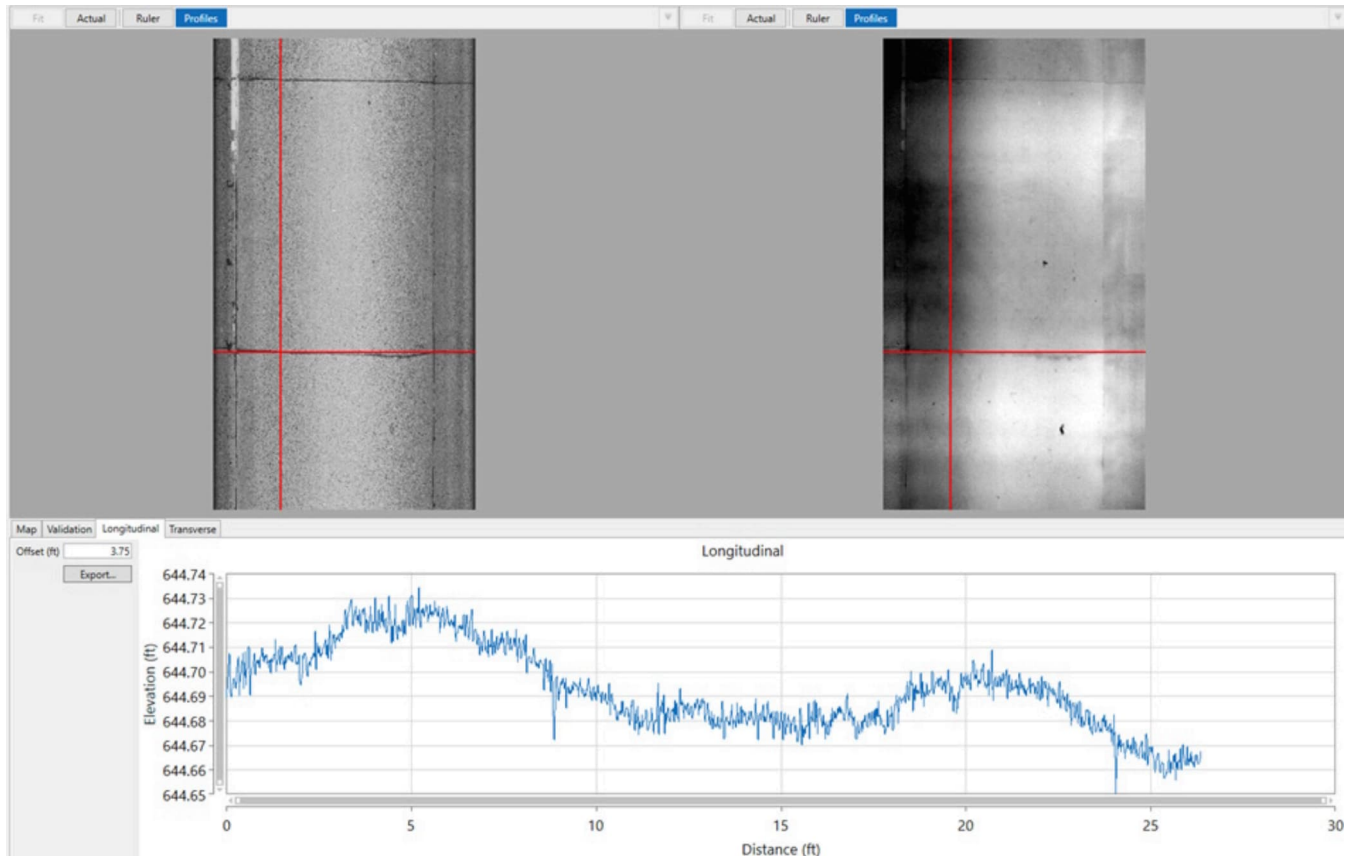


Clarity Overview



[Subscribe for updates](#) [Download Clarity](#)

What is ProVAL Clarity?

ProVAL Clarity (Clarity for short) is an engineering software application that allows users to view and analyze transverse pavement profiles in many different ways. It is easy to use yet powerful, capable of performing various types of transverse profile analyses.

Who sponsors Clarity?

ProVAL Clarity has been sponsored by the [TPF-5\(354\) Improving the Quality of Highway Profile Measurement](#) under Amendment No. 6. Viewer and Analysis Software for Standard 2D/3D Pavement Surface Image Data Format. The fund is from [TPF-5\(399\) Improve pavement surface distress and transverse profile data collection and analysis, Phase II](#).

Please help keep ProVAL Clarity alive and free to all users by **contacting your US DOT's Research Department** to participate in the above Pooled Fund Studies.

What does Clarity do?

ProVAL Clarity can verify, display, analyze, convert, share, and archive pavement images described in AASHTO MP 47.

What types of analyses can Clarity perform?

- Import PSI files.
- Verify PSI files.
- View intensity and range images side by side.
- Measure the length of features with a one-screen ruler.

- Export range images to *.raw, *.jpg, *.jp2, and *.pgm files.
- Export cross sectional profiles of an image to *.ppf files.

What is the pavement profile standard file format that Clarity uses?

The PSI format specified in AASHTO (2024), [Standard Specification for File Format of Two-Dimensional and Three-Dimensional \(2D/3D\) Pavement Image Data](#), AASHTO Designation: MP 47-24, American Association of State and Highway Transportation Officials.

Can I import files in other formats into Clarity?

Not at this point.

Where can I get Clarity?

You can easily download the latest ProVAL Clarity from www.RoadProfile.com! This website contains all updated information about ProVAL Clarity.

What is the current version of Clarity?

The current version of ProVAL Clarity is 1.0. Updates are posted on the ProVAL website. Continuous development and improvement of ProVAL Clarity will be underway.

How can I get technical support?

TBA

When and where are the Clarity workshops?

TBA

Where can I get more Information?

Contact:

Dr. George Chang, P.E.

Senior Engineering Consultant, The Transtec Group, A Terracon Company

6111 Balcones Drive, Austin, TX 78731 USA

Phone: +1 (512) 451 6233, ext. 227

Email: GKChang@TheTranstecGroup.com

www.TheTranstecGroup.com

www.RoadProfile.com