

# TRANSITION FROM PROVAL 2.7 TO 3.2

Features	ProVAL 2.7	ProVAL 3.2
<b>1 File and Project Management</b>	Separated project analysis file (*.pv2) and imported data files (*.ppf) are used to store analysis settings and profile data.	A ProVAL project file (*.pvp) is used to contain all imported profile data and analysis settings.
<b>2 Sections Handling and Cropping</b>	The “point reset” and “cropping” tools are used to define a section of interest.	The “Editor/Sections” is used to define multiple sections of various categories. Lead-in and lead-out are handled more gracefully.
<b>3 Ride Statistics</b>	Three modules are used for Ride Stats, Ride Stats at Interval, and Ride Stats Continuous analyses. A limit of one file to be analyzed is imposed in the latter two.	A single Ride Quality module is used to perform all three types of ride quality analyses for multiple files.
<b>4 Input Settings</b>	Input set is used to handle input settings.	An improved analysis template is used to manage input settings that are easily shared.
<b>5 File selection</b>	Users need to manually select files for analysis. Only limited numbers of files are allowed.	A file selector is used to speed up files and profiles selection. There is no limitation on number of files to be selected.
<b>6 Milepost Display</b>	Mileposts can only be in increasing manner.	Allow display of profile charts in terms of mileposts and in increasing or decreasing manner.
<b>7 Charts</b>	Limited functions for chart controls. No charts for fixed interval reports and histograms.	All charts come with controls for zooming, scrolling, panning, zoom history support, and image export. New charts are added.
<b>8 Report</b>	Save reports in HTML format.	PDF reports are in secured format.



Features	ProVAL 2.7	ProVAL 3.2
1 <b>File and Project Management</b>	Separated project analysis file (*.pv2) and imported data files (*.ppf) are used to store analysis settings and profile data.	A ProVAL project file (*.pvp) is used to contain all imported profile data and analysis settings.

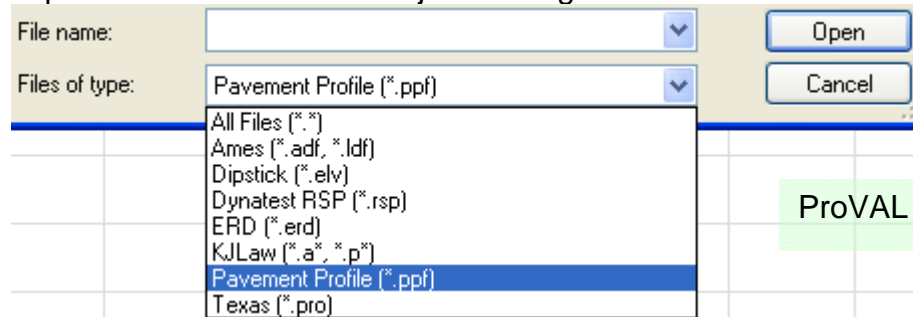
ProVAL 2.7 project file and its associated data files can be imported to ProVAL 3.2 as a single project file (\*.pvp). The ProVAL 3.2 project file is a single, compressed file acted as a container for all imported profile data and analysis settings. It is more efficient and to avoid losing data files. Any imported data can also be exported as the ASTM \*.ppf profile data format.

It is easy to start a new ProVAL file by launching ProVAL 3.2 and use the New speed button, or by clicking any ProVAL compatible files in Windows explorer. The latter will automatically launch ProVAL and start a new default project file.

It is even easier to open an existing ProVAL file by launching ProVAL 3.2 and use the Open speed button to select a project. Or, even better, you can simply click any \*.pvp file in Windows explorer and ProVAL will be fired up and loading your file.

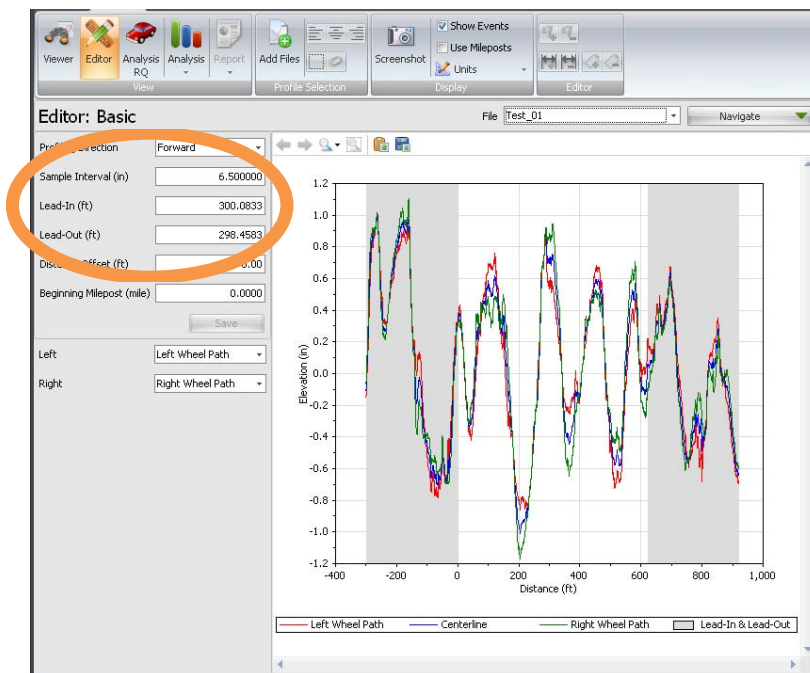


There are many other ways to start/open ProVAL 3.2 files: e.g. drag-&-drop, Most Recent Used (MRU) files, and etc. Also, there are more file formats that ProVAL import. See the File and Project Management section of the Users' manual for details.



Features	ProVAL 2.7	ProVAL 3.2
2 Sections Handling and Cropping	The “point reset” and “cropping” tools are used to define a section of interest.	The “Editor/Sections” is used to define multiple sections of various categories. Lead-in and lead-out are handled more gracefully.

To prepare for future advanced analyses, ProVAL 3.2 introduced the “Sections” facility under the Editor screen to add/define, remove, change, assign “types” to any sections. Though the ProVAL 3.2 Editor can display different sections in different colors, the analyses can only deal with one section at a time for now.



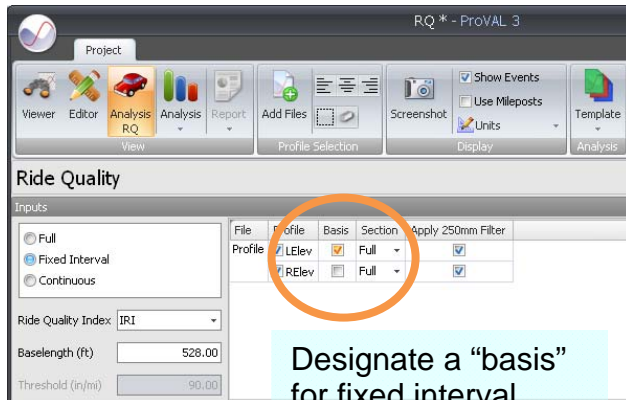
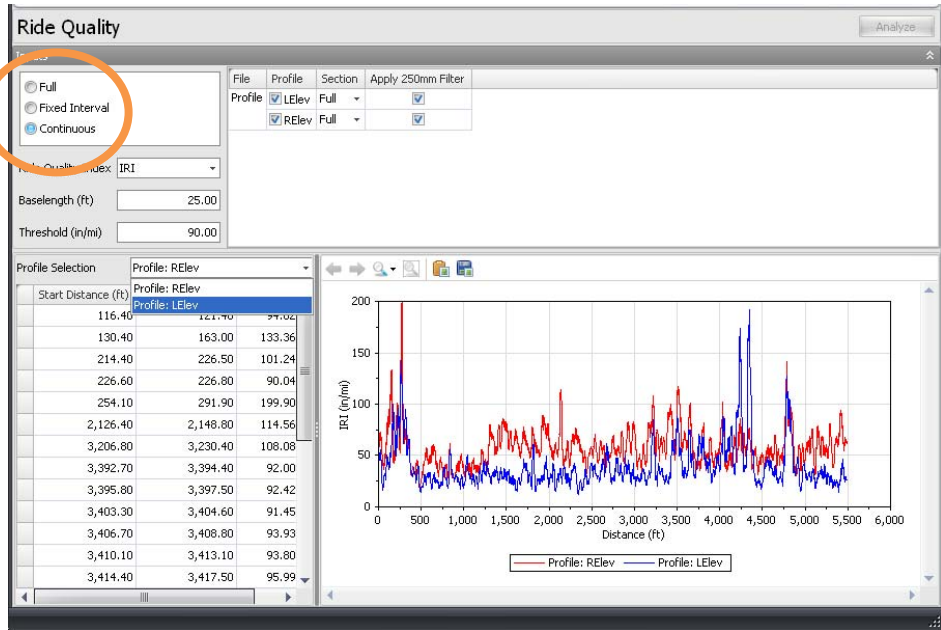
Lead-in and lead-out are now input as “distances” and profile section in between would automatically start at 0 distance offset. To emulate the “cropping” feature of ProVAL 2.7, simply input desired lead-in and lead-out distances and click the “Save” button to make the changes effective.



Features	ProVAL 2.7	ProVAL 3.2
3 Ride Statistics	Three modules are used for Ride Stats, Ride Stats at Interval, and Ride Stats Continuous analyses. A limit of one file to be analyzed is imposed in the latter two.	A single Ride Quality module is used to perform all three types of ride quality analyses for multiple files.

With ProVAL 3.2, it is much easier to do all ride quality analyses in a single module for the entire trace, fixed interval, or continuous roughness analyses.

Even better, now you can analyze multiple files in one shot! The profiler selector is re-designed to make profile selections a breeze.



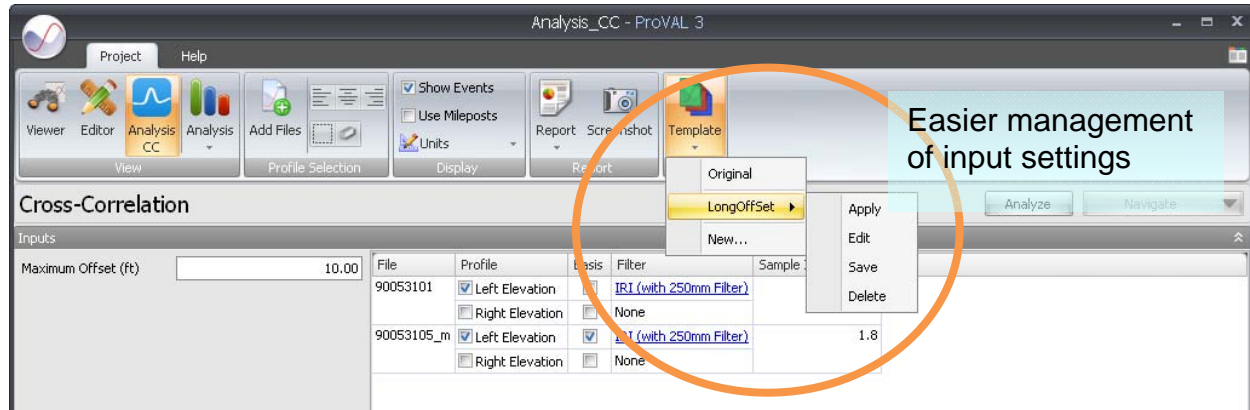
Designate a "basis" for fixed interval report

When performing fixed interval analyses, you will need to select a profile or file as the "basis" that serves as the basis for defining segments. All other profiles or files can be reported based on the segment definition of the "basis". This is designed to handle situations such as some profiles contain different distance offsets.



Features	ProVAL 2.7	ProVAL 3.2
<b>4 Input Settings</b>	Input set is used to handle input settings.	An improved analysis template is used to manage input settings that are easily shared.

In ProVAL 3.2, a template defines a set of input values for an analysis. A “default” template is provided for each analysis. New templates can then be created, exported, and imported.

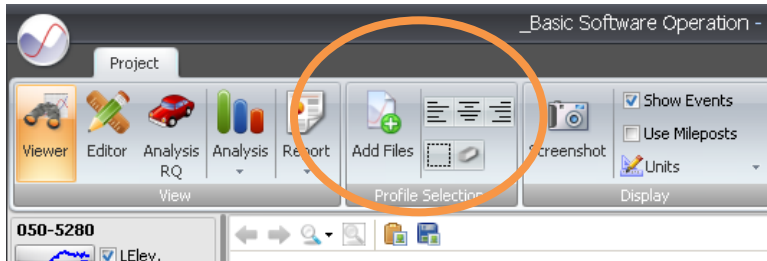


Agencies can take advantage of this feature to define/distribute Templates that match their own smoothness specifications. Agency personnel or contractors can import these templates and perform analyses consistently by using the same input settings.

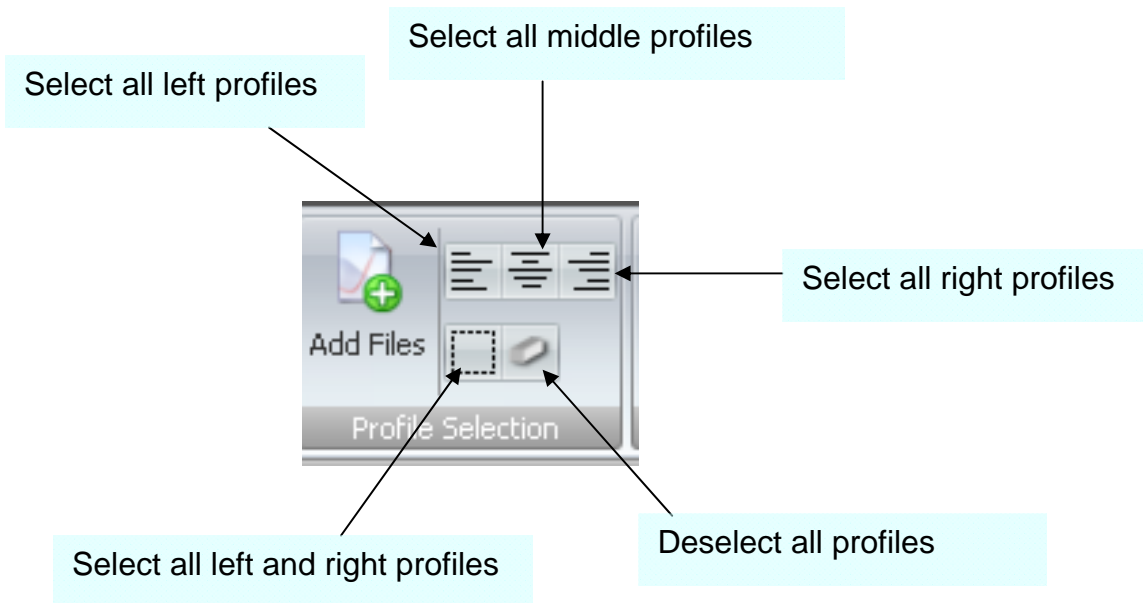


Features	ProVAL 2.7	ProVAL 3.2
<b>5 File selection</b>	Users need to manually select files for analysis. Only limited numbers of files are allowed.	A file selector is used to speed up files and profiles selection. There is no limitation on number of files to be selected.

Adding files to an analysis and profile selection has never been easier in ProVAL 3. Just use the “Add Files” and other speed buttons in the Profile Selection ribbon control!



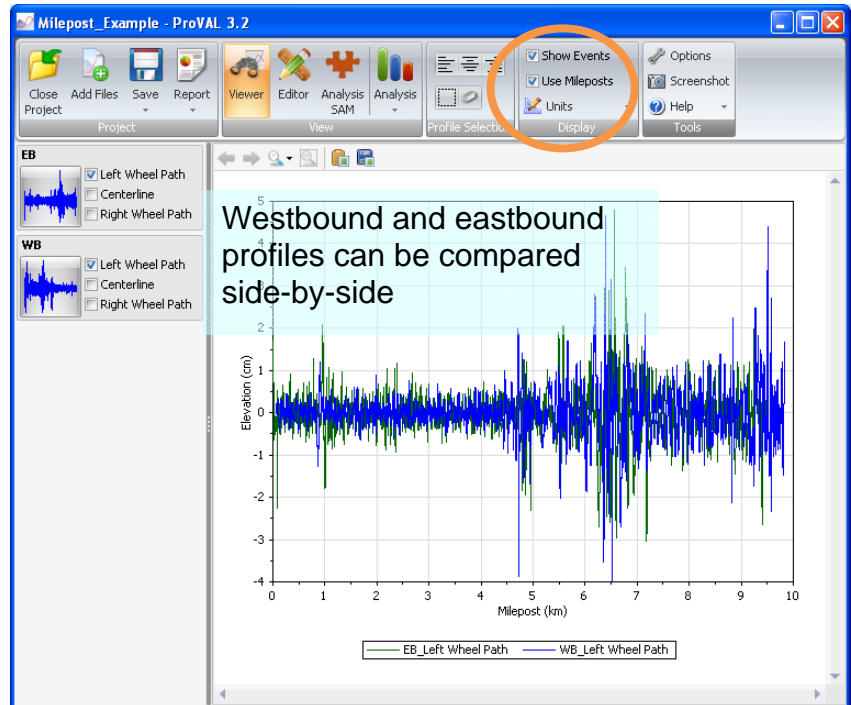
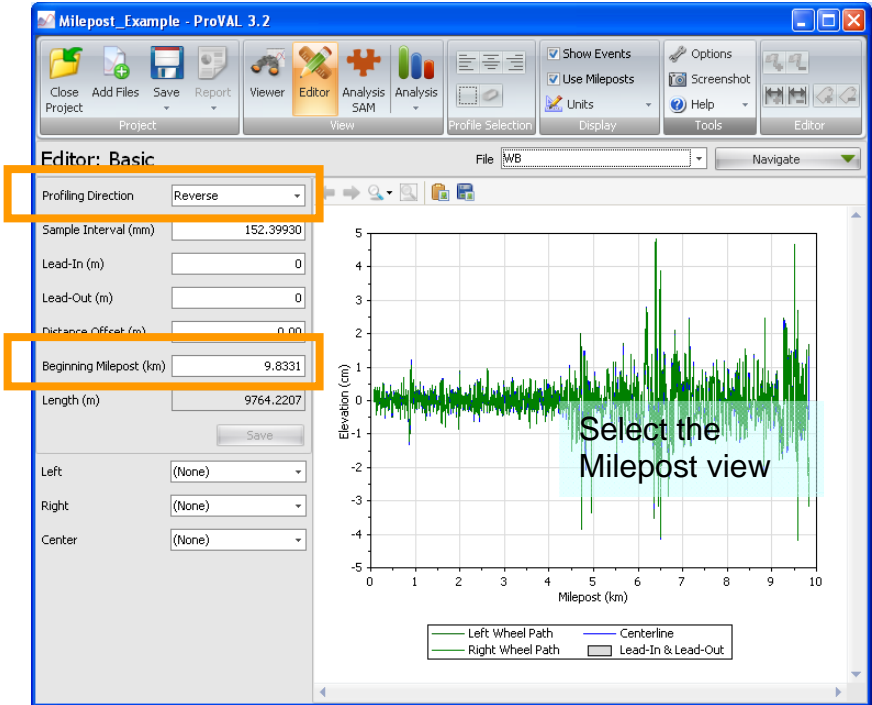
handy profile selection tool



Features	ProVAL 2.7	ProVAL 3.2
6 Milepost Display	Mileposts can only be in increasing manner.	Allow display of profile charts in terms of mileposts and in increasing or decreasing manner.

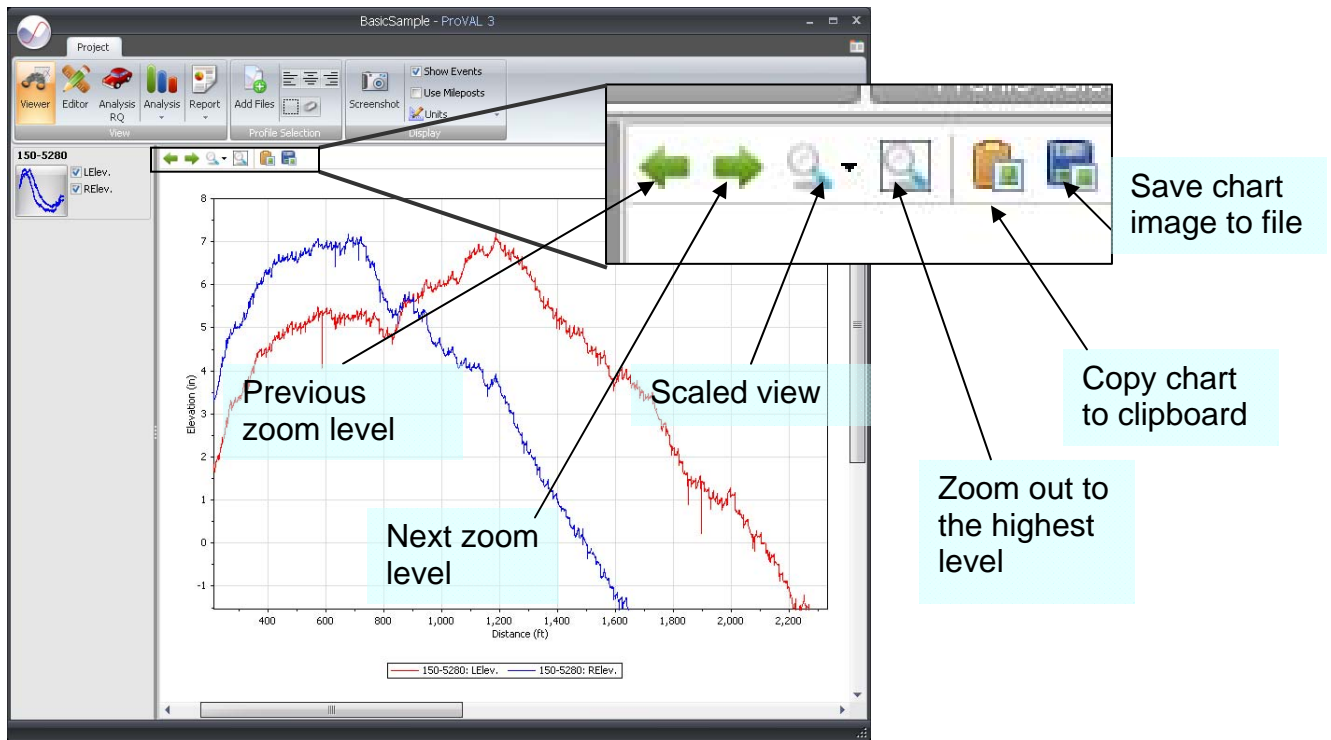
With a little trick in ProVAL 3.2, you can easily compare multiple files that are surveyed in either increasing or decreasing milepost. The key is to define the Profile Direction and Beginning Milepost in the Editor/Basic screen.

You should avoid using Begin Milepost with Distance Offset as the latter is used to account for differences in triggering.

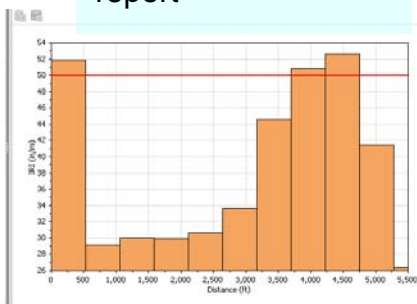


Features	ProVAL 2.7	ProVAL 3.2
7 Charts	Limited functions for chart controls. No charts for fixed interval reports and histograms.	All charts come with controls for zooming, scrolling, panning, zoom history support, and image export. New charts are added.

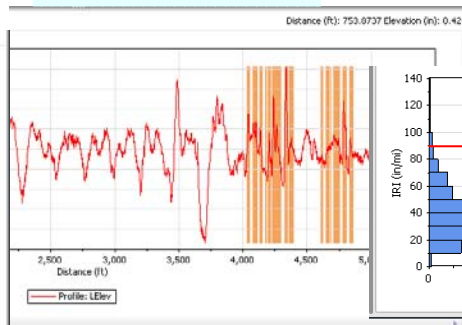
In ProVAL 3, all charts come with powerful zooming (forward/backward), scrolling, panning (using the right mouse button), zoom history support (yes, it remembers all zoom levels that you did before), scaled view (say, 0.1 mile view window), chart images saving. These controls allow users to efficiently identify profile features.



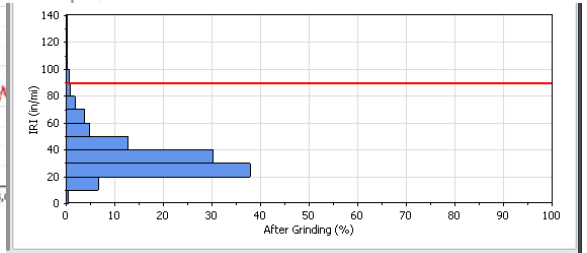
Bar chart of fixed interval roughness report



Grind locations



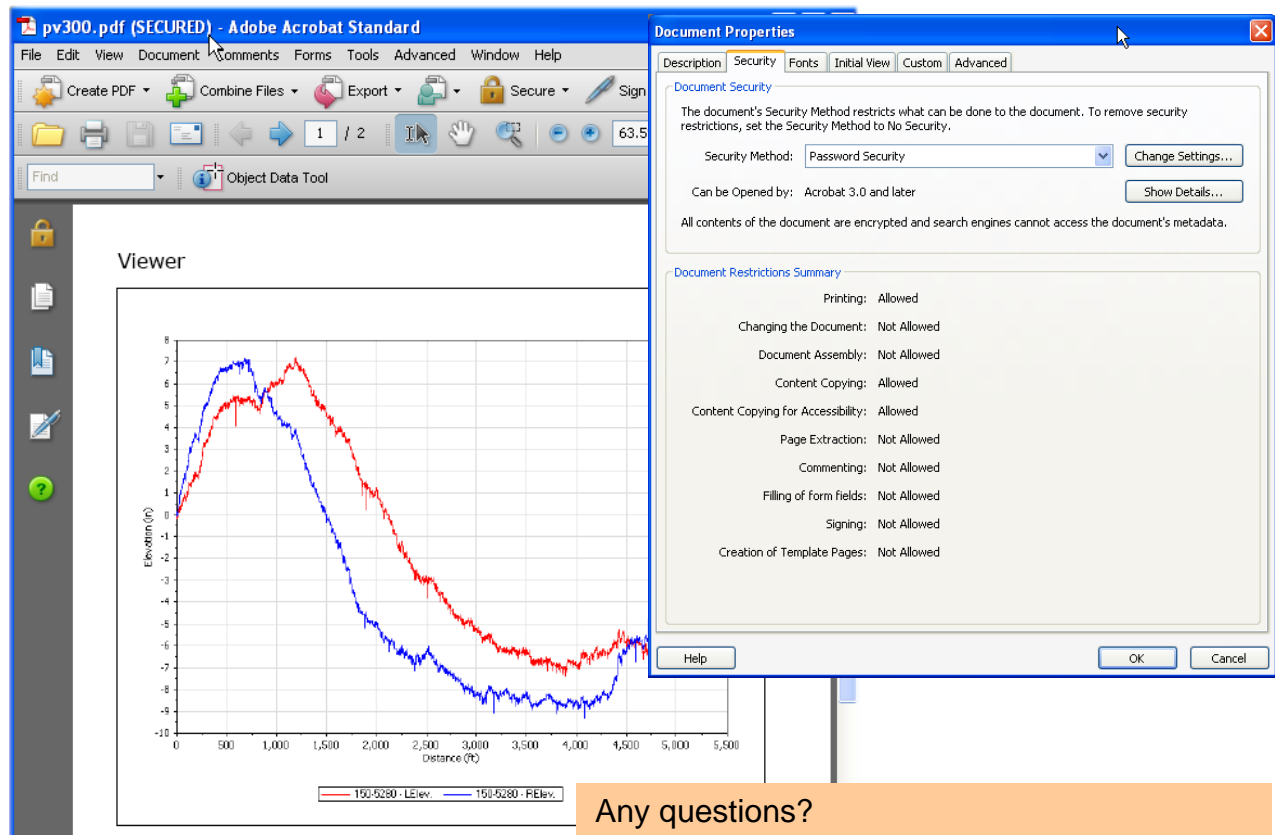
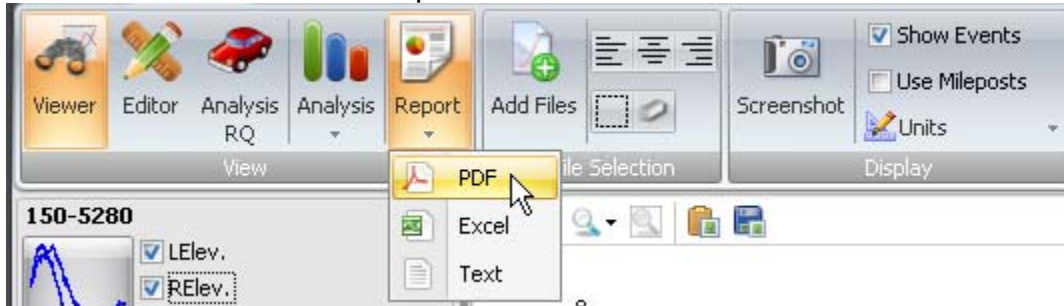
Histogram of continuous roughness report





Features	ProVAL 2.7	ProVAL 3.2
8 Report	Save reports in HTML format.	PDF reports are in secured format.

Many users (esp. agencies) have been asking for ProVAL reports in “secured” PDF. Starting ProVAL 3.2, there is a built-in PDF report writer to generate secured reports that can not be modified. Reports in Excel and text forms are also enhanced.



Any questions?

- ▶ Check out the ProVAL 3.2 Users' Manual
- ▶ Visit the ProVAL website [www.RoadProfile.com](http://www.RoadProfile.com)
- ▶ Contact us: [info@RoadProfile.com](mailto:info@RoadProfile.com)